



Criterion 7 – Institutional Values and Best Practices

7.1.4 Water Conservation facilities available in the Institutions

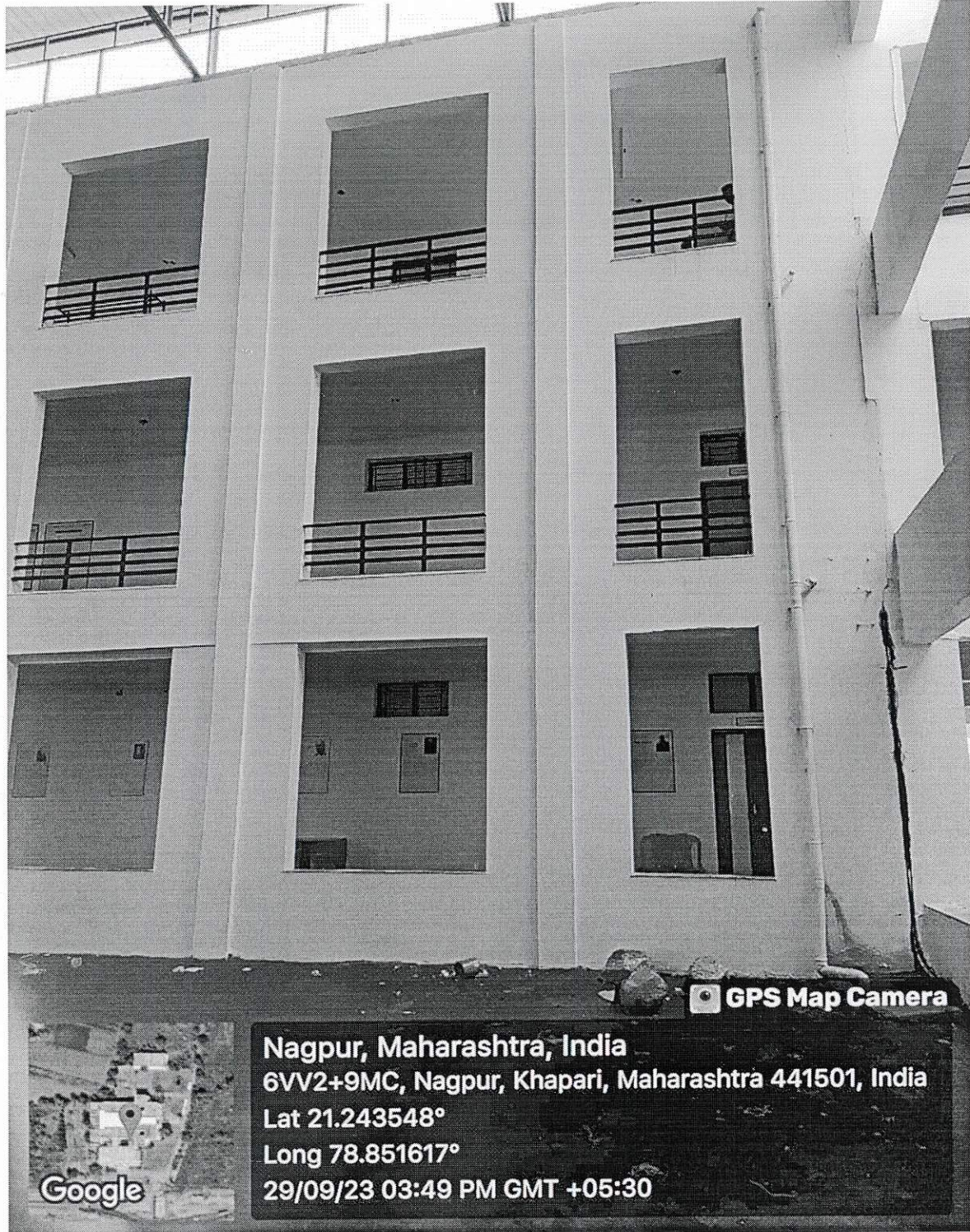
INDEX

Sr. No.	Content	Page No.
1	Rain Water Harvesting	2
2	Bore well	5
3	Construction of tanks and bunds	6
4	Maintenance of water bodies and distribution system in the campus	7

7.1.4 Water conservation facilities available in the Institution:

- 1. Rain water harvesting**
- 2. Bore well /Open well recharge**
- 3. Construction of tanks and bunds**
- 4. Waste water recycling**
- 5. Maintenance of water bodies and distribution system in the campus**

RAIN WATER HARVESTING



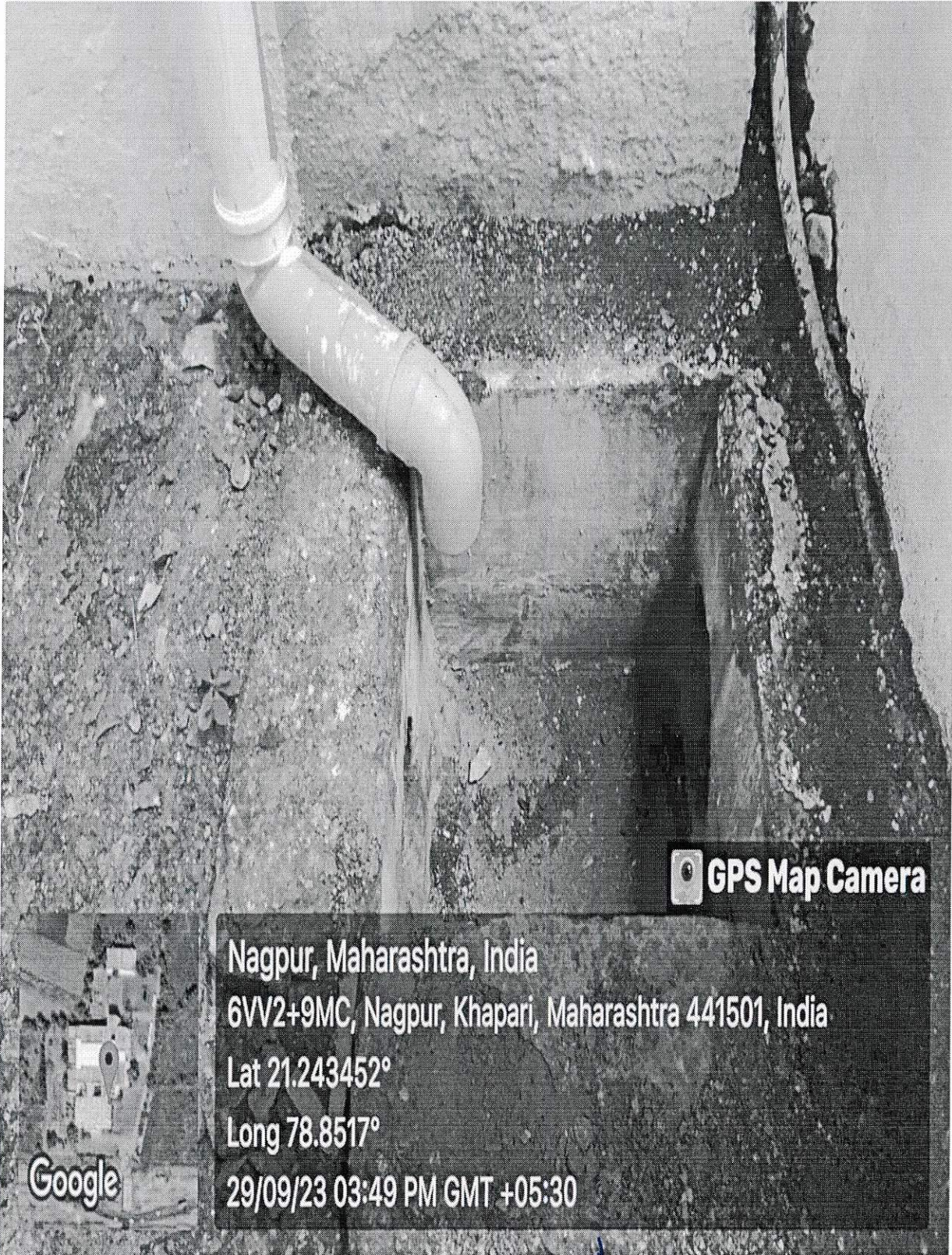
Sarvasiddhanta Education Society's

Swaminarayan Siddhanta Institute of Technology

Affiliated to Rashtrasant Tukadoji Maharaj Nagpur University

Nagpur-Katol Highway Road, Khapri (Kothe),

Tal: Kalmeshwar, Nagpur, Maharastra-441501



 **GPS Map Camera**

Nagpur, Maharashtra, India

6VV2+9MC, Nagpur, Khapari, Maharashtra 441501, India

Lat 21.243452°

Long 78.8517°

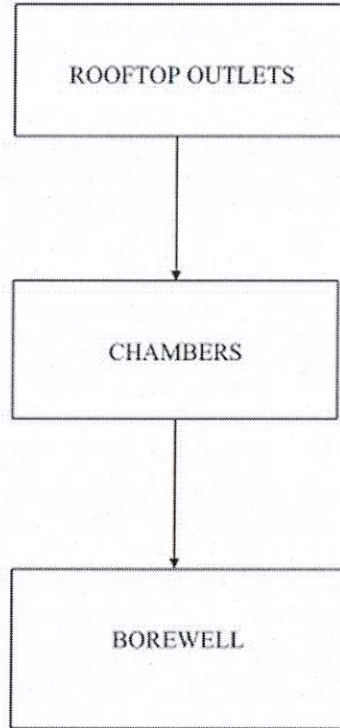
29/09/23 03:49 PM GMT +05:30

Google

Principal
Swaminarayan Siddhanta Institute
of Technology, Kalmeshwar,
Dist. Nagpur-441501

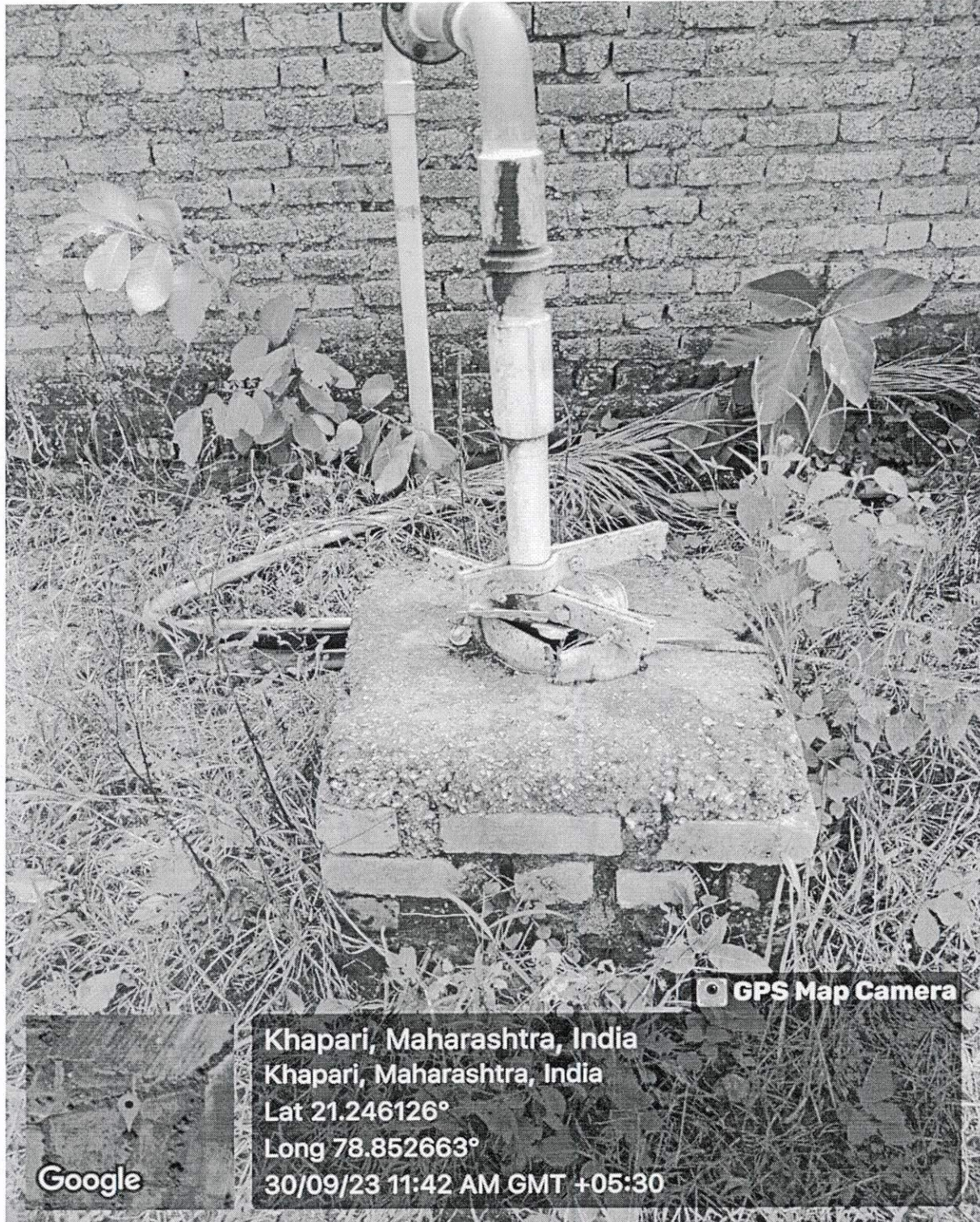


Layout of Rainwater Harvesting System for Swaminarayan Siddhanta Institute of Technology



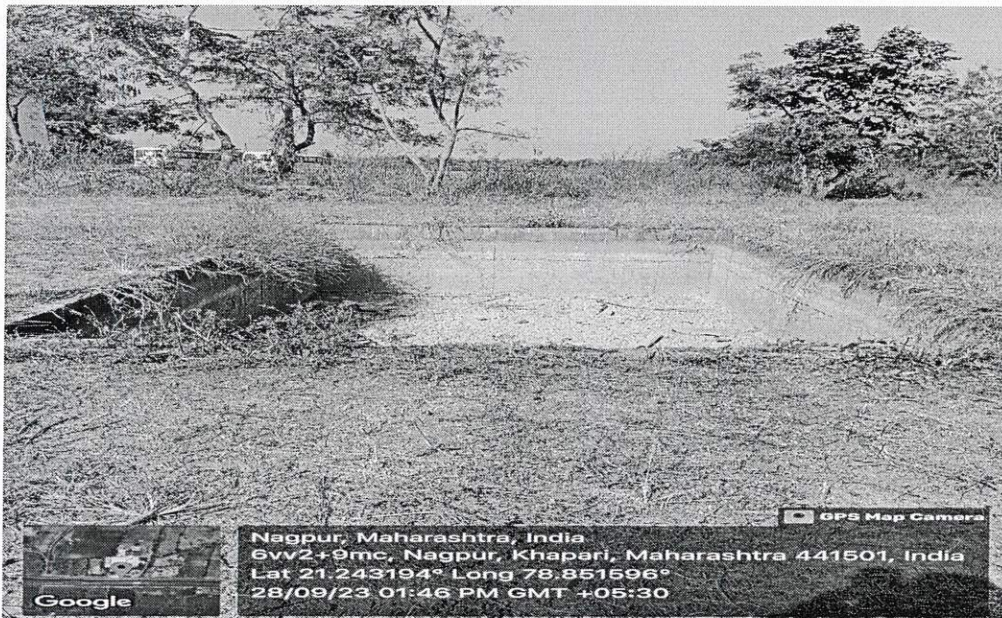

Principal
Swaminarayan Siddhanta Institute
of Technology, Kalmeshwar,
Dist. Nagpur-441501

BORE WELL



Principal
Principal
Swaminarayan Siddhanta Institute
of Technology, Kalmeshwar,
Dist. Nagpur-441501

CONSTRUCTION OF TANKS AND BUNDS



Principal
Principal
Swaminarayan Siddhanta Institute
of Technology, Kalmeshwar,
Dist. Nagpur-441501

MAINTENANCE OF WATER BODIES AND DISTRIBUTION SYSTEM IN THE CAMPUS

