



## **Criterion 7 – Institutional Values and Best Practices**

### **7.1.2 The Institution has facilities for alternate sources of energy and energy conservation measures**

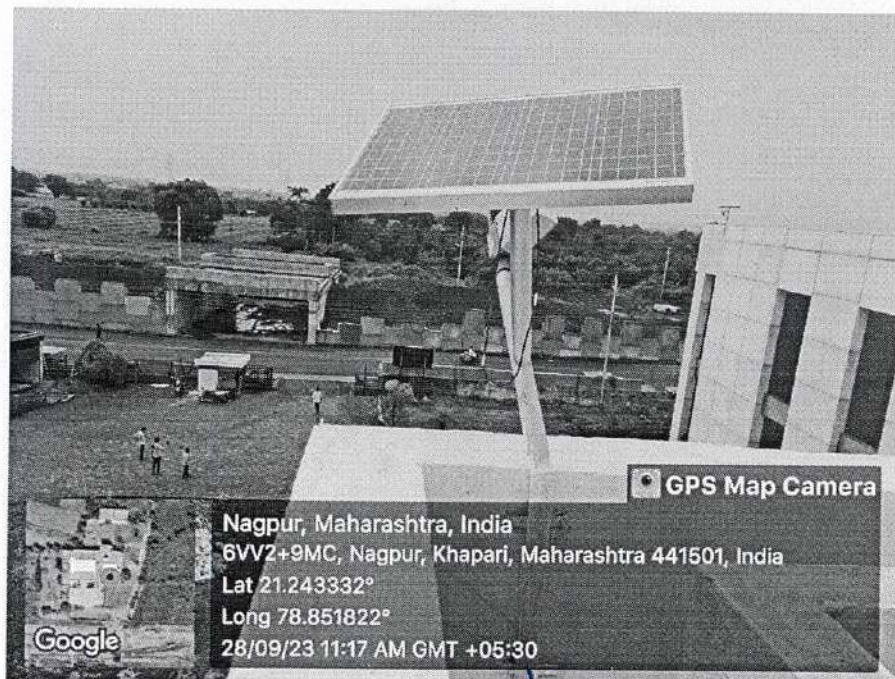
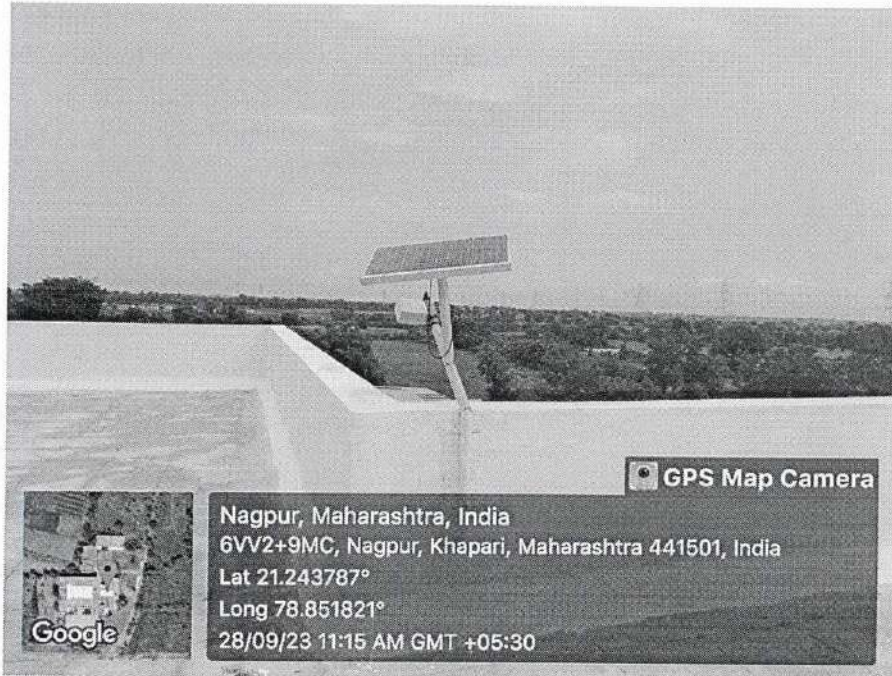
#### **INDEX**

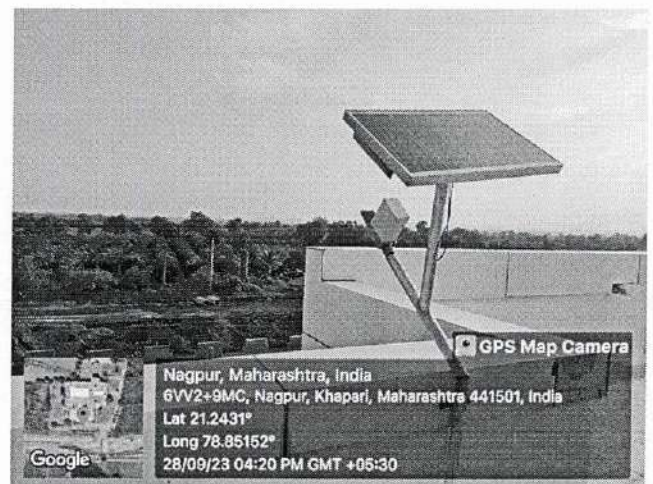
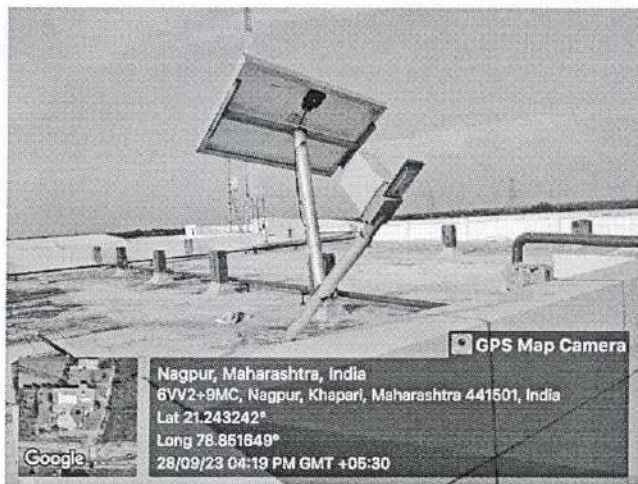
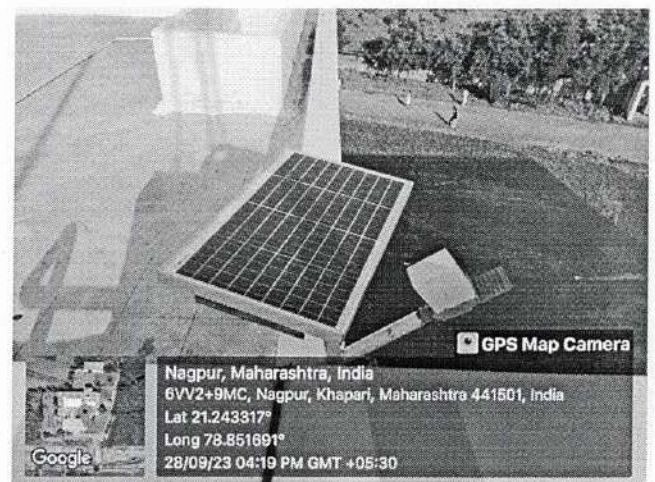
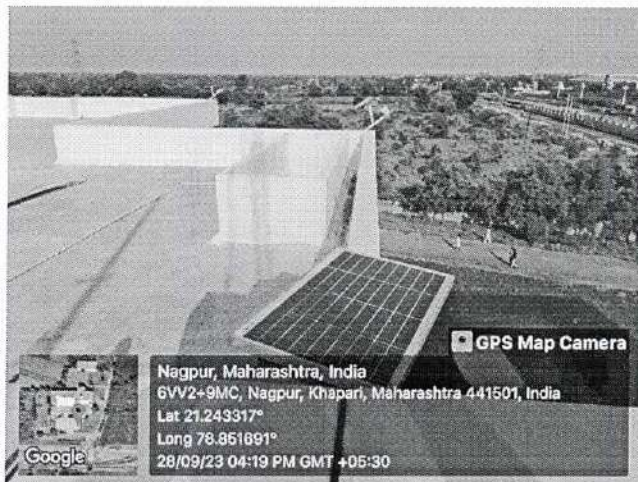
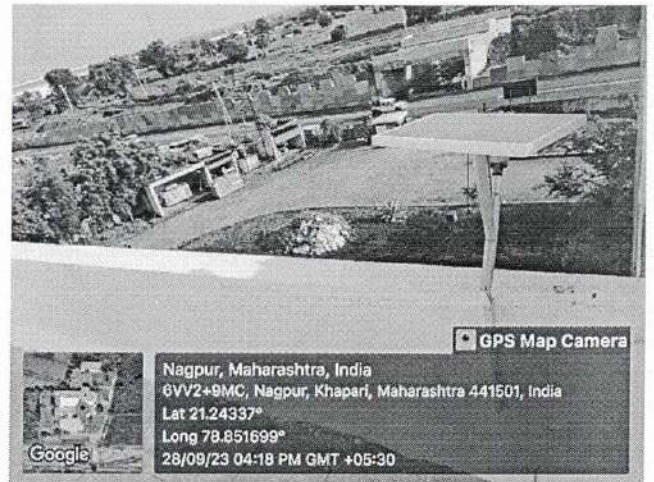
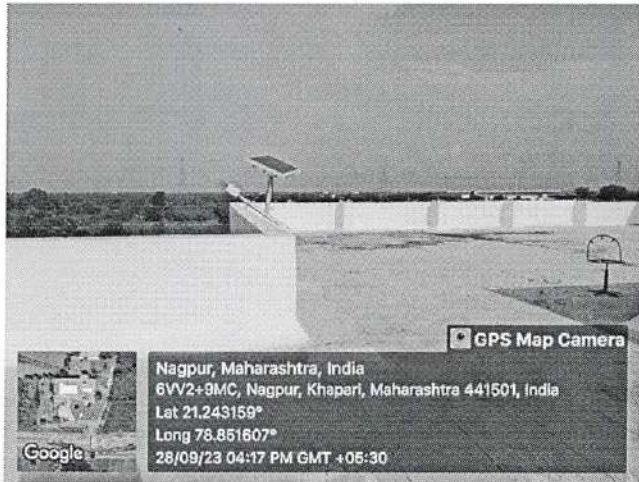
<b>Sr. No.</b>	<b>Content</b>	<b>Page No.</b>
<b>1</b>	Solar Energy	<b>2</b>
<b>2</b>	Use of LED Bulbs	<b>5</b>
<b>3</b>	Sensor –based energy conservation	<b>7</b>

*The Institution has facilities for alternate sources of energy and energy conservation measures*

1. Solar energy
2. Biogas plant
3. Wheeling to the Grid
4. Sensor-based energy conservation
5. Use of LED bulbs/ power efficient equipment

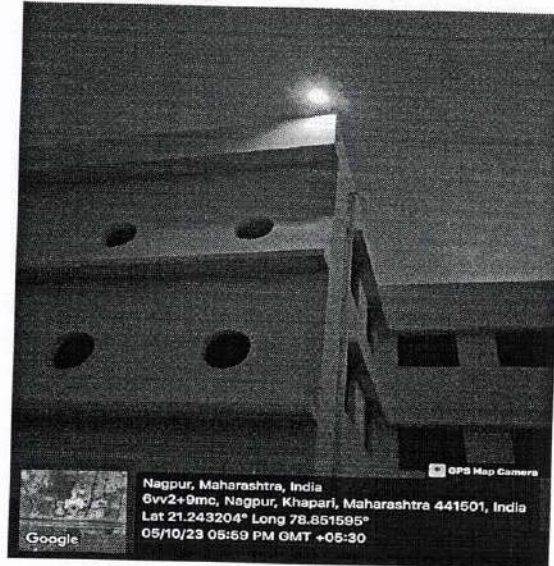
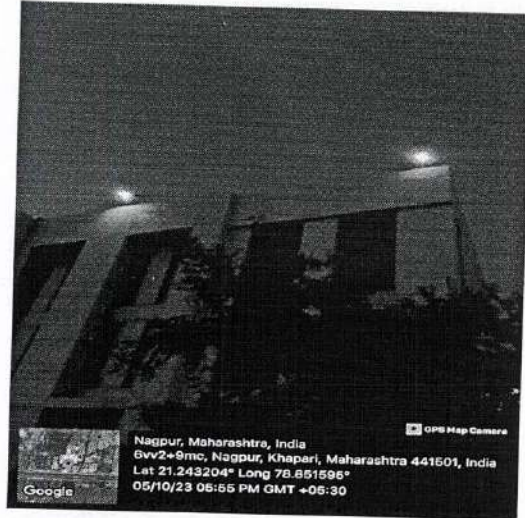
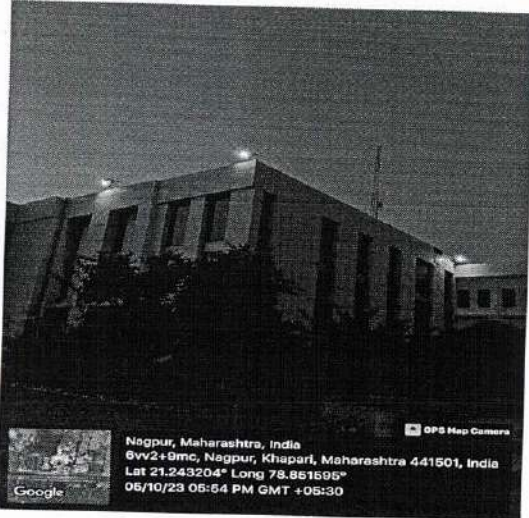
## SOLAR ENERGY





*DM*  
**Principal**  
 Swaminarayan Siddhanta Institute  
 of Technology, Kalmeshwar,  
 Dist. Nagpur-441501

Sarvasiddhanta Education Society's  
**Swaminarayan Siddhanta Institute of Technology**  
Affiliated to Rashtrasant Tukadoji Maharaj Nagpur University  
Nagpur-Katol Highway Road, Khapri (Kothe),  
Tal: Kalmeshwar, Nagpur, Maharashtra-441501



*DM*  
**Principal**  
Swaminarayan Siddhanta Institute  
of Technology, Kalmeshwar,  
Dist. Nagpur-441501

Sarvasiddhanta Education Society's

**Swaminarayan Siddhanta Institute of Technology**

Affiliated to Rashtrasant Tukadoji Maharaj Nagpur University

Nagpur-Katol Highway Road, Khapri (Kothe),

Tal: Kalmeshwar, Nagpur, Maharashtra-441501

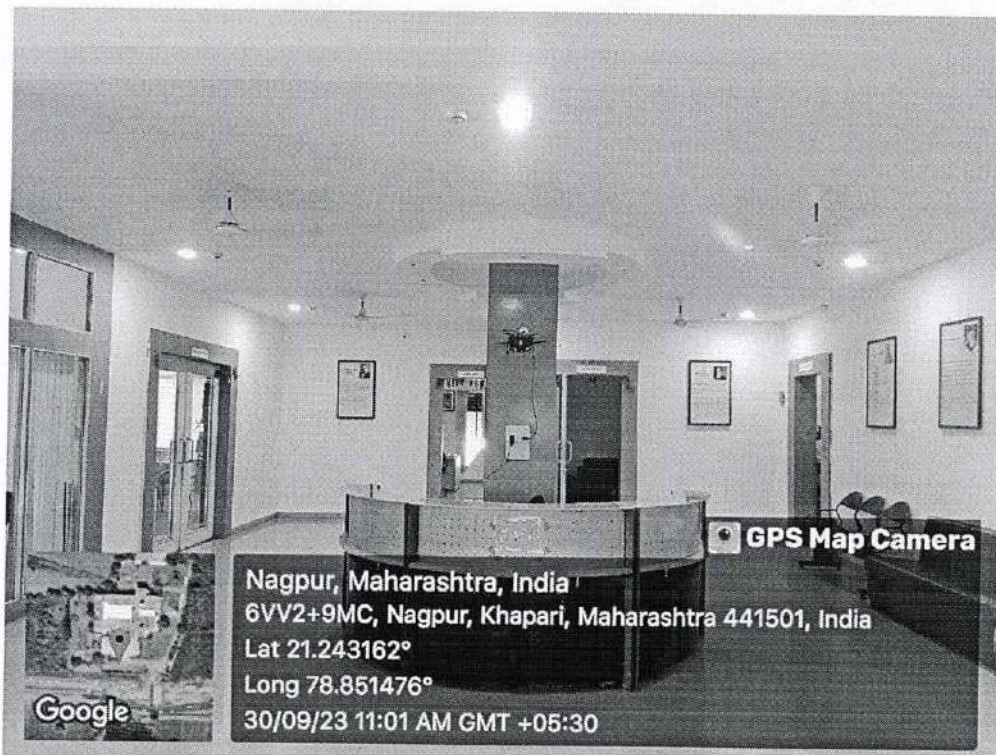
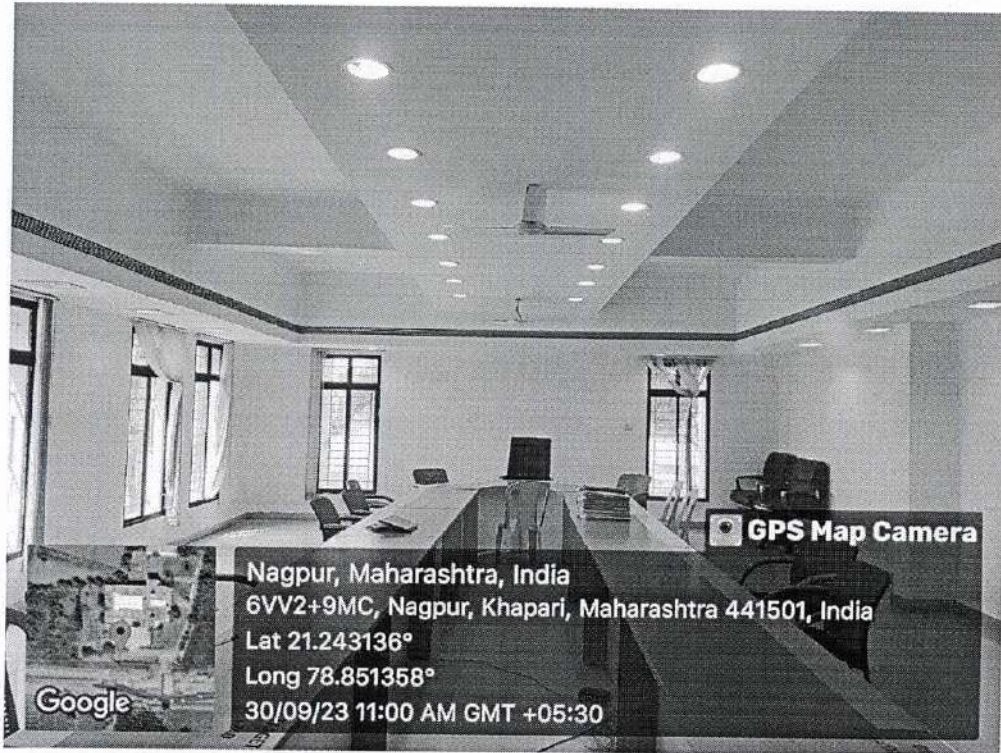



## USE OF LED BULBS



*Om*  
Principal  
Swaminarayan Siddhanta Institute  
of Technology, Kalmeshwar,  
Dist. Nagpur-441501

Sarvasiddhanta Education Society's  
**Swaminarayan Siddhanta Institute of Technology**  
Affiliated to Rashttrasant Tukadoji Maharaj Nagpur University  
Nagpur-Katol Highway Road, Khapri (Kothe),  
Tal: Kalmeshwar, Nagpur, Maharastra-441501



  
**Principal**  
Swaminarayan Siddhanta Institute  
of Technology, Kalmeshwar,  
Dist. Nagpur-441501

Sarvasiddhanta Education Society's

**Swaminarayan Siddhanta Institute of Technology**

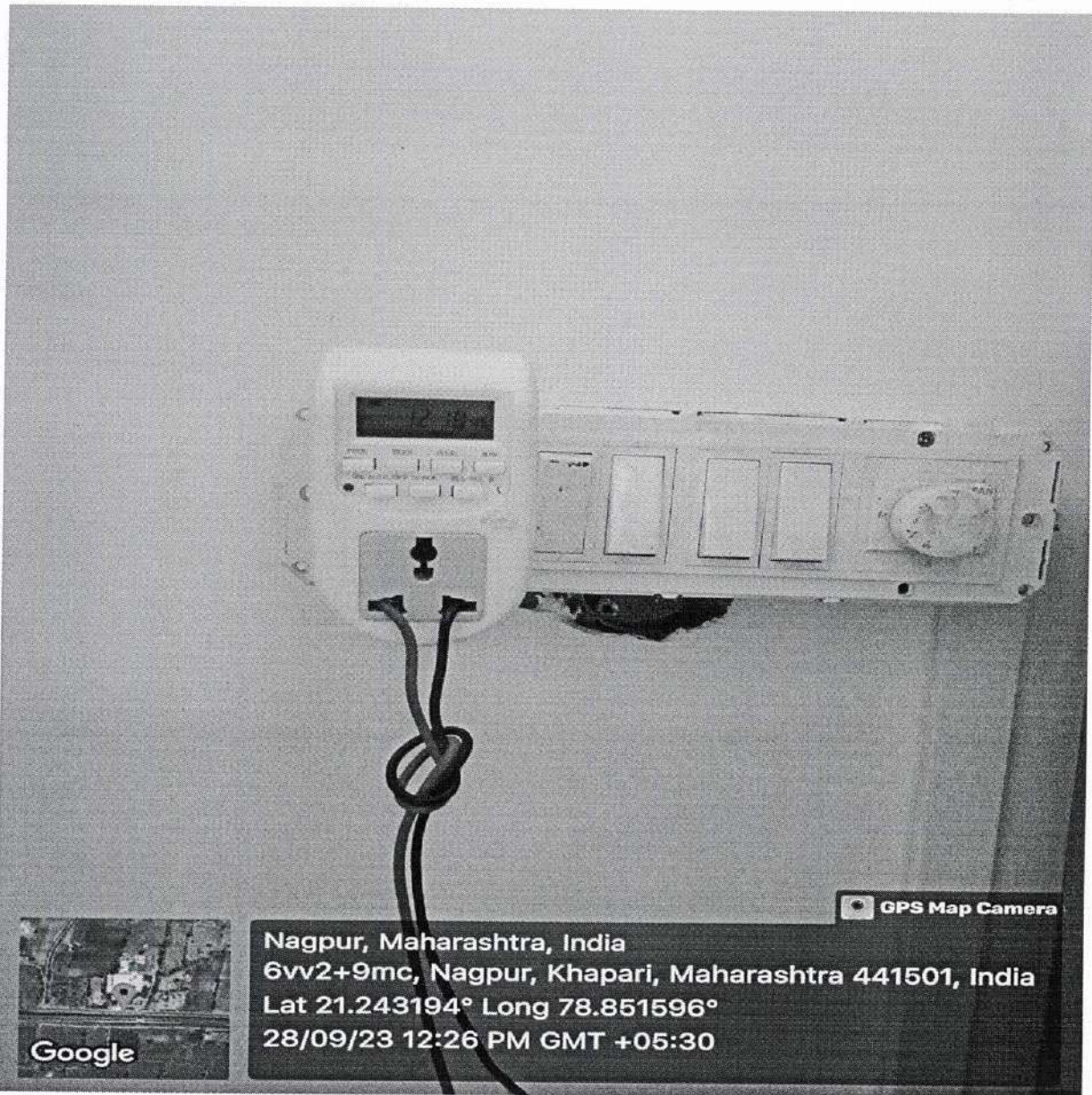
Affiliated to Rashtrasant Tukadoji Maharaj Nagpur University

Nagpur-Katol Highway Road, Khapri (Kothe),

Tal: Kalmeshwar, Nagpur, Maharashtra-441501



## SENSOR-BASED ENERGY CONSERVATION



Google

GPS Map Camera  
Nagpur, Maharashtra, India  
6v2+9mc, Nagpur, Khapari, Maharashtra 441501, India  
Lat 21.243194° Long 78.851596°  
28/09/23 12:26 PM GMT +05:30

  
Principal  
Swaminarayan Siddhanta Institute  
of Technology, Kalmeshwar,  
Dist. Nagpur-441501

# SARANG ENTERPRISES

Electrical Contractor's  
24/427 South Civil line Badban, Chhindwara (M.P.) 480 001  
(Work Shop LINGA, CHHINDWARA)

Bill No. / Order No. 380

Date 10/07/2023

Electrification, Instalation, Domestic & Indurtrial Power wiring, Rewinding, Repairing  
and all types of Engineering work's

To, Swaminarayan Siddhanta Institute of Techno  
Kalmesh

Sr. No.	PARTICULARS	RATE	Qty.	AMOUNT
1	Automatic cut off timer	1530	01	1530 = 00
2	Borewell Automatic Water Controller machine	3850	01	3850 = 00
Total				5380 = 00

Five thousand three hundred eighty only

SARANG ENTERPRISES  
FOR SARANG ENTERPRISES  
South Civil Line Chhindwara-480001

Principal  
Swaminarayan Siddhanta Institute  
of Technology, Kalmeshwar,  
Dist. Nagpur-441501